

LV CONTROLGEAR SOLUTIONS

Contactors, Overload Relay and MPCB



Powering Business Worldwide



DODIA ELECTRICALS



What Matters:
Guaranteed performance
and protection of equipment



DODIA ELECTRICALS

Contactor



- > Widest range of contactors globally from 7A to 2600A in Air and Vacuum type
- > Range: 7A to 500A Air type and 580A to 2600A Vacuum type contactor
- > Available in AC3 and AC1 duty for 3P and 4P version and AC6 special capacitor duty contactor
- > Electronic actuated coil in AC and DC: Contactors picks up at low voltage
- > Low Power consumption coils: Energy saving
- > Integrated suppressor with coil and twin terminals for easy connection
- > Same dimensions of AC and DC contactors: Easy engineering

Overload Relay



- > Range: 0.1A to 1500A
- > Adjustable Trip class setting for protection at heavy duty start
- > Complement the contactor series with similar width
- > Direct mounting with contactor up to 175A: No separate accessories required
- > Manual or automatic reset
- > GF device provides enhanced protection against ground faults



MPCB



- > Range: 7A to 63A
- > Complement the contactor series with similar width
- > Breaking capacity available up to 150kA
- > Common accessories with tool less installation
- > Twin terminal for ease of wiring
- > MPCB enclosure available with IP40 and IP65(also with emergency stop button)

3 basic units + 8 trip blocks = current range up to 65 A

12 A (45 mm)
PKE 12



Motor protection

0.3 A → 12 A
0.09 - 5.5 kW (400 V)

System protection

32 A (45 mm)
PKE 32



1 A → 32 A
0.37 - 15 kW (400 V)

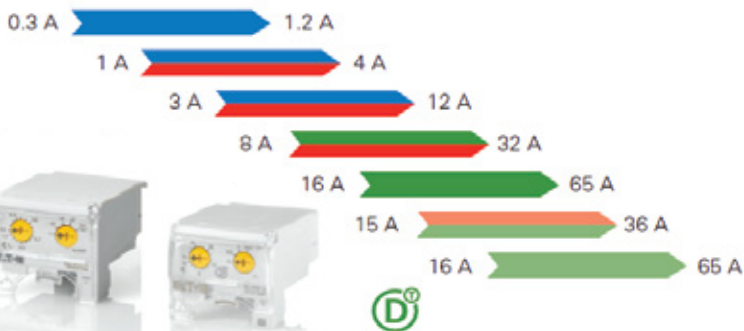
15 A → 36 A

65 A (55 mm)
PKE 65

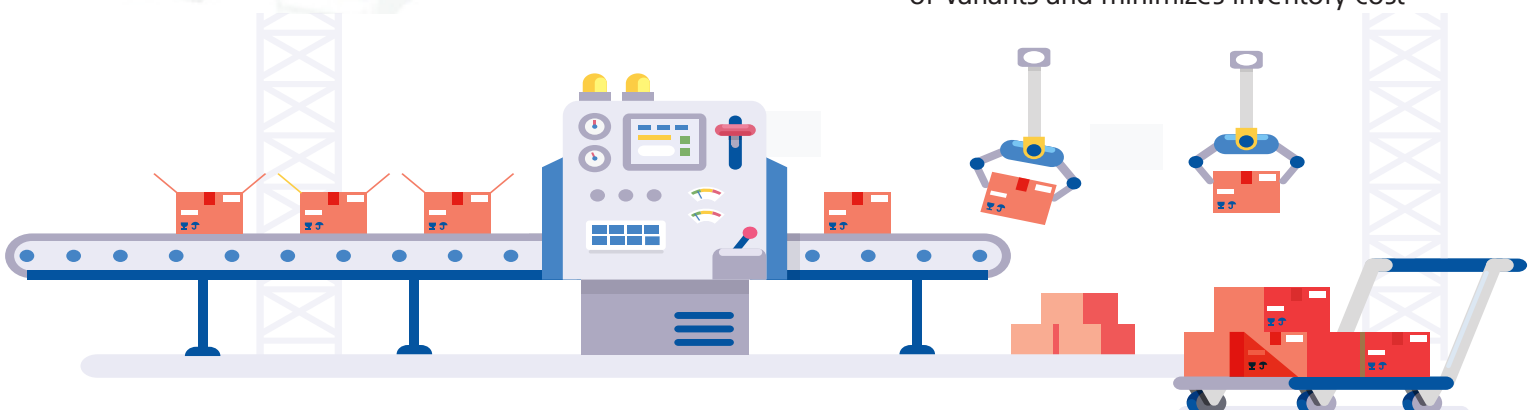


32 A 8 A → 65 A
4 - 30 kW (400 V)

36 A 15 A → 65 A



- > Range: 0.3A to 63A
- > PKE provides high level of flexibility featuring modular and compact design with plug-in control unit
- > Breaking capacity available up to 150kA
- > Tool less installation
- > Twin terminal for ease of wiring
- > Large current setting ranges: reduces number of variants and minimizes inventory cost





120000+ SQ FT
World-class Manufacturing
Facility in Pondicherry

About **EAT•N**

Eaton is a global leading power management company head quartered in USA, serving customers across the world. Our proven technologies enable customers to generate more power using fewer resources, answering the demands of today's fast changing world. Eaton products and services provide the power inside thousands of products and projects from energy efficient buildings, cities, infrastructure to next generation aircraft, cars, trucks and machines. Eaton is a Fortune 500 company recognized amongst the most admired firms in our industry.

Eaton Power Quality Private Limited, India, is a 100% subsidiary and a part of electrical sector of Eaton Corporation. We are catering to every industrial segment with versatile solutions which includes Switchgear: LV & MV Solutions, Fusegear: LV & MV solutions, UPSs and software solutions.

- Operating in **175** countries
- 100,000+** employees
- 100+** years of experience
- \$ 21.6** Billion \$ in sales
- 18,000+** patents

Our Own Brand
LAPTRON®

CHINT CHINT
 ELECTRIC

AUTOMATION BRAND

SELEC® Creating Best Value	Autonics (Korea)	OMRON Industrial Automation	JAIBALAJI	pizzato	EAPL
salzer® Relays	Honeywell Limit Switch	sub-zero Controlled cooling, always	MW MEAN WELL	BTH Innovations close to you.	

SWITCHGEAR BRAND

C&S TC electric	SIEMENS Ingenuity for Life	Schneider Electric	EAT•N Powering Business Worldwide
-------------------------------	--------------------------------------	------------------------------	---

Address : 9/11, Picket 'X' Road, G.T. Building, Lohar Chawl, Mumbai - 400002